

bleed line

die line

safe line

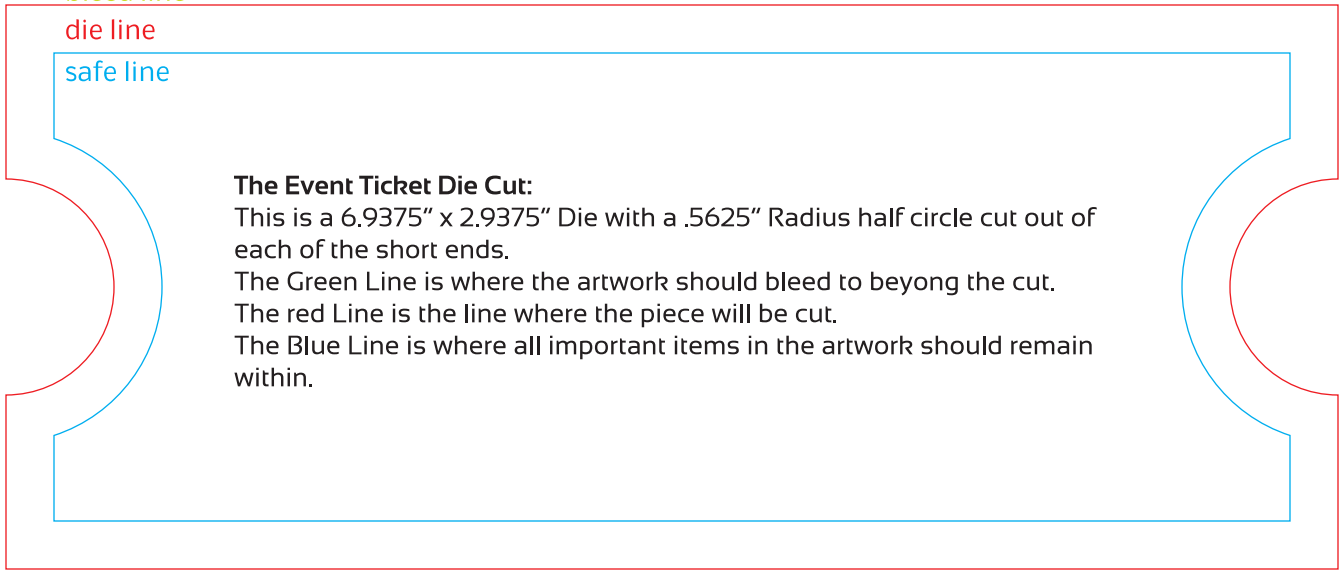
The Event Ticket Die Cut:

This is a 6.9375" x 2.9375" Die with a .5625" Radius half circle cut out of each of the short ends.

The Green Line is where the artwork should bleed to beyond the cut.

The red Line is the line where the piece will be cut.

The Blue Line is where all important items in the artwork should remain within.



bleed line

die line

safe line

The Event Ticket Die Cut:

This is a 6.9375" x 2.9375" Die with a .5625" Radius half circle cut out of each of the short ends.

The Green Line is where the artwork should bleed to beyond the cut.

The red Line is the line where the piece will be cut.

The Blue Line is where all important items in the artwork should remain within.

